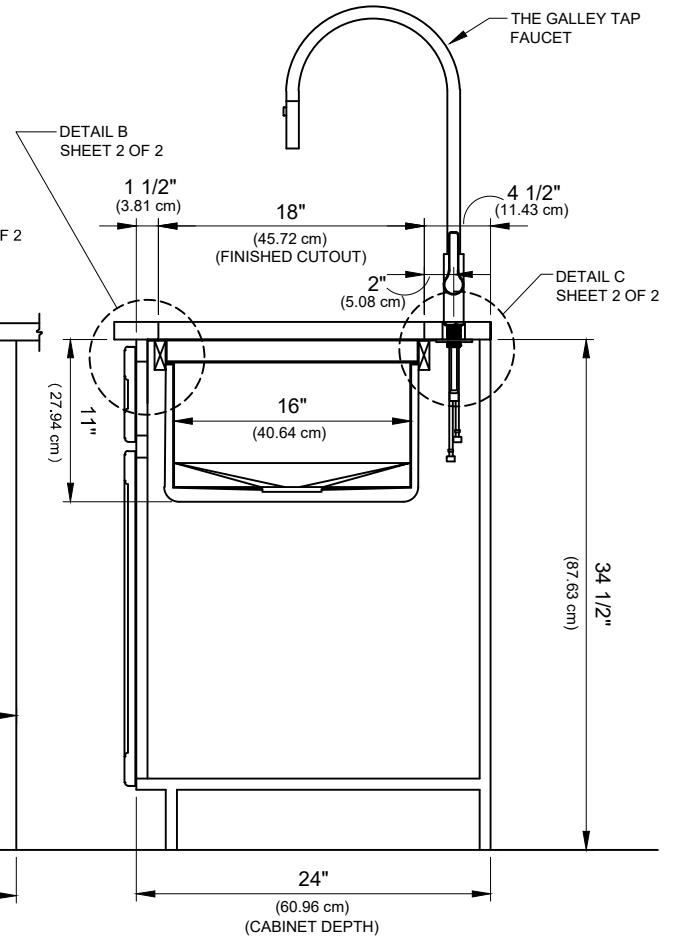
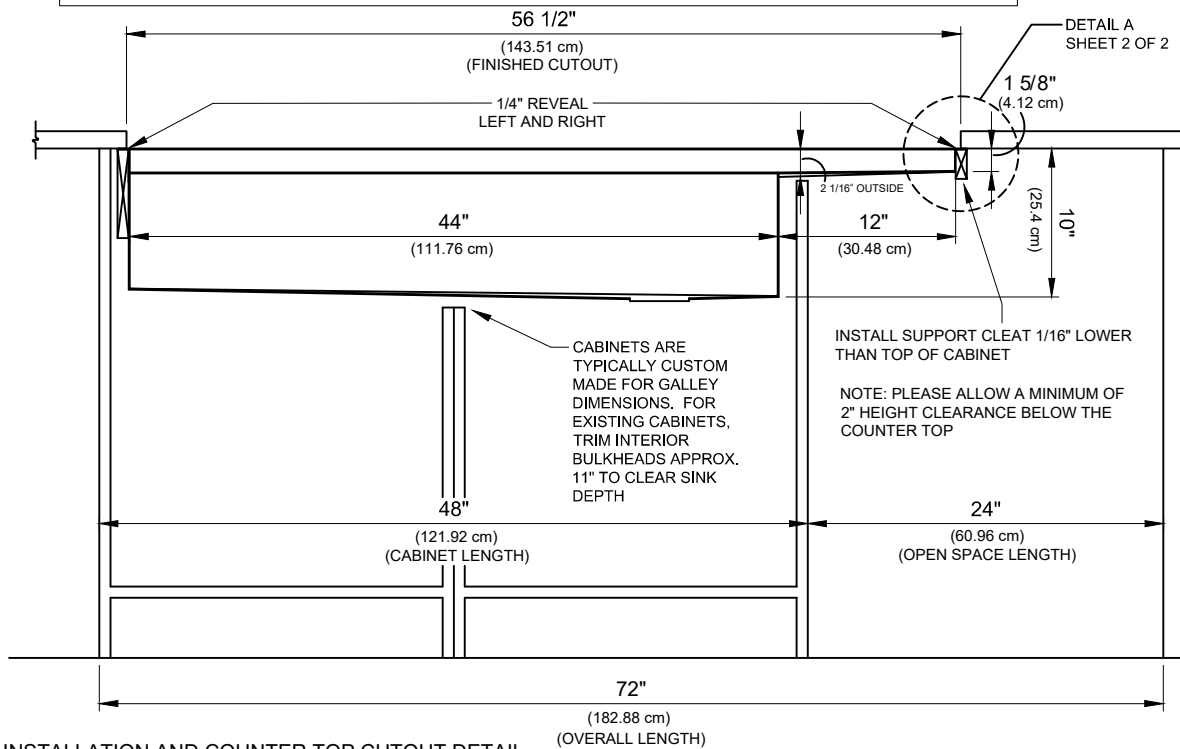


- SUGGESTED PLACEMENT FOR THE GALLEY TAP AND OPTIONAL ACCESSORIES**
- |   |   |
|---|---|
| T. GALLEY TAP   | <b>INSTALL HOLE DIAMETERS</b>               |
| 1. GALLEY SOAP DISPENSER OR DECK SWITCH   | GALLEY TAP: 1 3/8" MAX                      |
| 2. GALLEY DECK SWITCH OR AUTOMATIC KITCHEN STRAINER KNOB OR *HOT & COLD WATER DISPENSER | GALLEY DECK SWITCH: 1 3/8" MAX              |
| 3. GALLEY *HOT & COLD WATER DISPENSER OR SOAP DISPENSER                                 | GALLEY SOAP DISPENSER: 1" MIN TO 1 3/8" MAX |
| 4. GALLEY *HOT & COLD WATER DISPENSER OR SOAP DISPENSER                                 |   |
- NOTE: CENTER HOLE DIAMETERS 2" BEHIND CUTOUT
- \*AVAILABLE 2018



**INSTALLATION AND COUNTER TOP CUTOUT DETAIL**

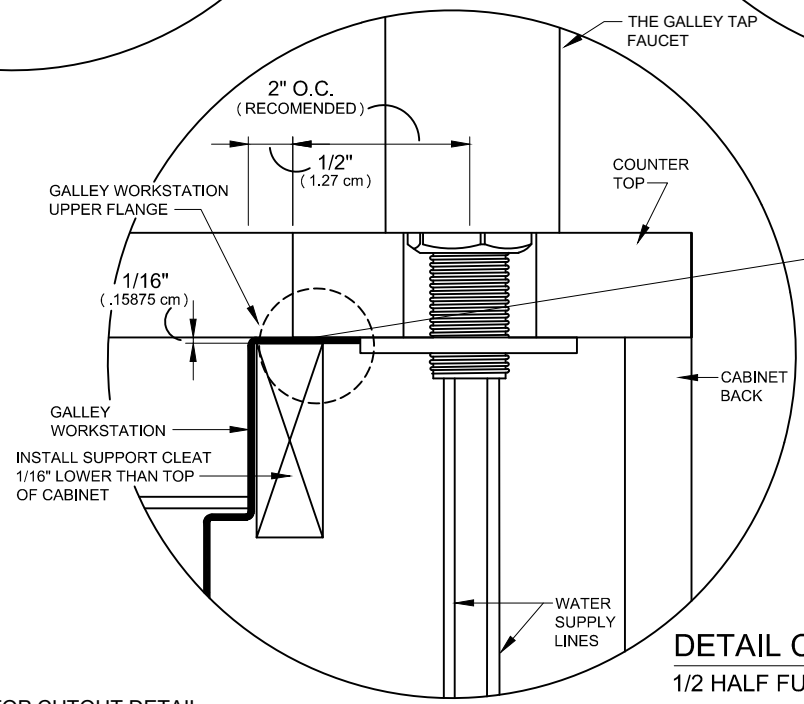
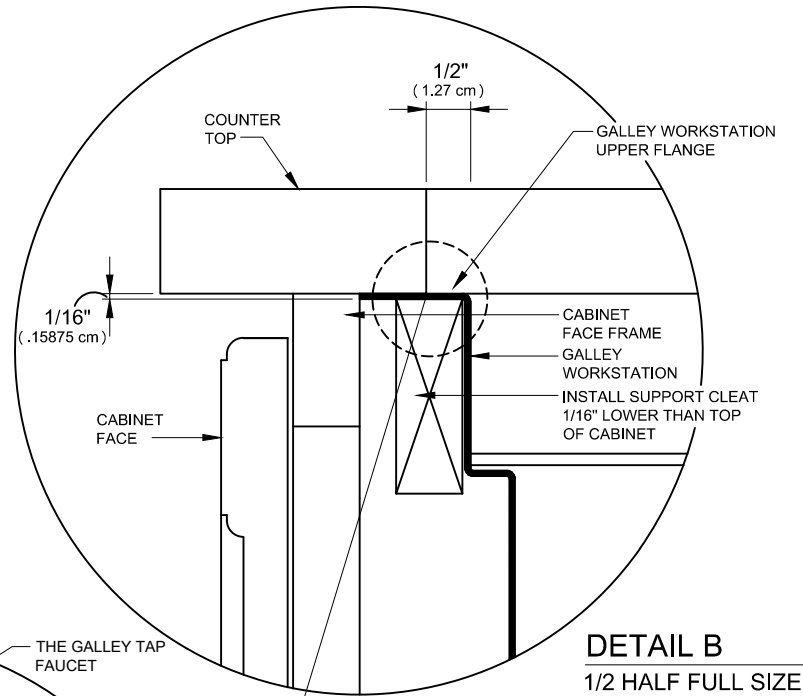
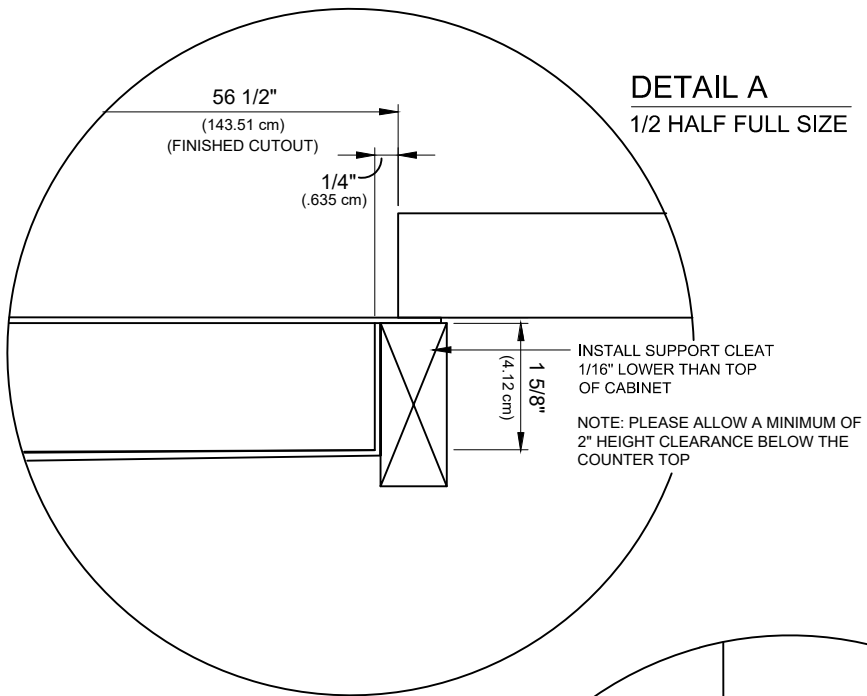
SHEET 1 OF 2

STAINLESS STEEL COMPLIANCE ASME A112.19.3-2008/CSA B45.4-08

WE RESERVE THE RIGHT TO MAKE REVISIONS WITHOUT NOTICE IN THE DESIGN OF PRODUCTS OR IN PACKAGING UNLESS THIS RIGHT HAS SPECIFICALLY BEEN WAIVED AT THE TIME THE ORDER IS ACCEPTED.

**IWS-4-S-SS+DD-12-S-SS**

**THE GALLEY**  
 REINVENT YOUR KITCHEN



- FOR A SILICONE-FREE FLANGE:**
1. COVER WHAT WILL BE THE EXPOSED 1/2" OF TOP FLANGE WITH TAPE.
  2. APPLY A HEAVY BEAD OF SILICONE TO THE UN-TAPED PART OF THE FLANGE.
  3. SET THE COUNTER TOP, PRESS DOWN ONTO THE FLANGE. THE SILICONE SHOULD FILL ANY GAPS.
  4. WIPE EXCESS SILICONE OFF OF EXPOSED FLANGE.
  5. REMOVE TAPE

**IWS-4-S-SS+DD-12-S-SS**

INSTALLATION AND COUNTER TOP CUTOUT DETAIL  
 SHEET 2 OF 2  
 STAINLESS STEEL COMPLIANCE ASME A112.19.3-2008/CSA B45.4-08

WE RESERVE THE RIGHT TO MAKE REVISIONS WITHOUT NOTICE IN THE DESIGN OF PRODUCTS OR IN PACKAGING UNLESS THIS RIGHT HAS SPECIFICALLY BEEN WAIVED AT THE TIME THE ORDER IS ACCEPTED.